

Here's to 40 Years of Foxes



Our family has made it this far by championing what we love – immersive and sustainable safaris that add to, rather than take away from, our favourite slice of the African wild in Southern Tanzania.

In celebration of our 4 decades (and counting!) expertise in showcasing 'true' Tanzania to safari-lovers, here is our team's **Ultimate 7 Day Safari in Southern Tanzania**

This Itinerary Usually Offered at:

High Season: \$4598 pp

Low Season: \$4163 pp

Book using Discount Code

FOXES40YEARS

to unlock this special rate:

High Season: \$4309 pp

Low Season: \$3889 pp

(Valid for travel until 31/03/23)

Your Itinerary *an overview*

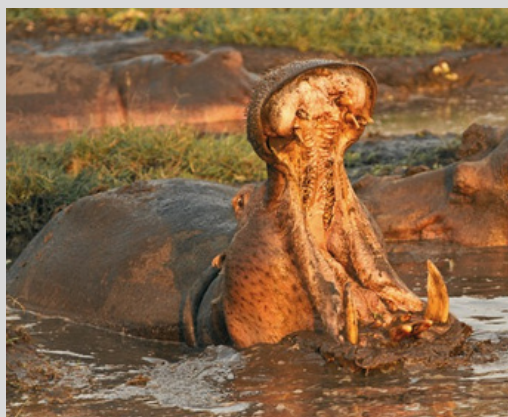
1 Night Best Western or similar — Dar es Salaam

3 Nights Rufiji River Camp — Nyerere National Park (Selous)

3 Nights Ruaha River Lodge — Ruaha National Park



Claim a ring side seat to Southern Tanzania at its wildest



Your Itinerary *detailed*

DAY 1 | ARRIVAL

On your arrival at Dar es Salaam Airport, you'll be met by a friendly member of Foxes Safari Camps who will escort you to the Dar es Salaam hotel and help you check-in. Whether you'd like to explore the city or get some rest it's up to you, but tomorrow your real Tanzanian adventure begins!

DAY 2 | NYERERE NATIONAL PARK (SELOUS)



The following morning we'll pick you up from the hotel at 09:00 after breakfast and return to the airport for the Safari Air Link flight to Nyerere National Park (Selous).

Flight No 01 (times may vary with schedule requirements)

Departure Time: 10:30 Arrival Time 11:15

A guide from Rufiji River Camp will be at the airstrip waiting to greet you and take you on a game drive through the park before helping you check into your room.

In the afternoon you will go out and begin to explore Nyerere National Park (formerly known as Selous) with a game drive, before returning to camp at dusk - just in time to freshen up before drinks around the camp fire.

DAY 3 & 4 | NYERERE NATIONAL PARK (SELOUS)



The night before, the manager will have discussed the options for today's safaris. Here's what you would be able to choose from to turn your bucket list into a reality:

Early Morning Nature Walk

Departing at 06:30, returning for a late breakfast at 09:30.

Early Bird Game Drive

Departing 06:30 with a packed breakfast, returning at 11:30.



Morning Game Drive

Departing after breakfast at 08:30, returning in time for lunch.

Morning Boat Safari

Departing after breakfast at 08:30, returning in time for lunch.



Full-Day Game Drive

Departing after breakfast at 08:30 with a picnic lunch, returning at 16:00 for afternoon tea.

Afternoon Game Drive

Departing at 16:00 and returning at dusk, in time for sundowners.



Afternoon Boat Safari

Departing at 16:00 and returning at dusk, in time for sundowners.

Exclusive Game Drives are also on offer providing you with flexible use of a private vehicle and guide between 06:30 and 18:00.

Nyerere National Park is estimated to have one third of all Tanzania's African Hunting Dog and the highest concentration in all of Africa. The landscape is predominantly flat and covered with miombo trees. Lions and leopards join the Hunting dogs as prevalent predators in the reserve and there is a good variety of prey animals from wildebeest and buffalo to smaller animals like warthog and impala. The river supports a rich and varied bird life, the banks providing a nesting bank for the bee eaters and fishing grounds for Kingfishers.



DAY 5 | RUAHA NATIONAL PARK

An early walk or game drive brings you back in time for breakfast and the departure back to the airstrip for the onward flight to Ruaha National Park.

Flight No 02 (times may vary with schedule requirements)

Departure Time: 11:00 Arrival Time: 13:00

One of Ruaha River Lodge's guides will greet you at the airstrip and take you to the lodge and help you check-in.

Ruaha National Park is the second-largest national park in Tanzania and is located in the centre of the country. This magical place lies in the convergence zone where northern and southern hemisphere birds and mammal species overlap, resulting in an overwhelming number of birds (530 recorded) plants (1400) and a large number of mammal species. The Great Ruaha River is the lifeline of the park as it is its only permanent water source.

A full day game drive along the river takes you over rocky kopjes, home to the Greater kudu, Roan antelope and elephant, and winds down along the river bank through open plains, perfect for cheetah, herds of buffalo, warthogs, jackals, bated Foxes – the list is endless. The lion population here is now so large (largest in Tanzania) that they have gained film rights for their prowess at hunting Giraffe – which is not their traditional fare. The river banks are rich with birdlife, hippos and crocs. For the more adventurous, above the escarpment lives the more elusive Sable Antelope.

Ruaha also boasts a well-developed road network, with plenty of different routes to explore for morning game drives before returning to the lodge for lunch. Time spent on your veranda at the water's edge, or sitting in one of the 2 bar areas will be an equally enjoyable part of your safari here where the animals wander in front of your room to come down to drink. Finish off your day with an afternoon drive to the hippo pool and catch the African sunset over the plains.

DAY 6 & 7 | RUAHA NATIONAL PARK



During your time staying at Ruaha River Lodge choose between half-day shared game drives or full-day with picnic lunch promising an action-packed day out in the unscripted Tanzanian bush.

Early Morning Game Drives

Departing at 06:30 with a picnic breakfast, returning at 11:30



Morning Game Drives

Departing after breakfast at 08:30, returning in time for lunch.

Afternoon Game Drives

Departing at 16:00 and returning at dusk, in time for sundowners.



Full-Day Game Drives

Departing after breakfast at 08:30 with a picnic lunch, returning at 16:00 for afternoon tea.

Exclusive Game Drives are also available for private use.



DAY 8 | DEPARTURE

After breakfast you will have the chance to enjoy one final game drive through Ruaha as you slowly wind your way to the airstrip for your flight back to Dar es Salaam.

Flight No 03 (times may vary with schedule requirements)

Departure Time: 13:15 Arrival Time: 15:30

A staff member of Foxes Safari Camps will meet you at the airport and help you transfer to your international flight, or check you in to your hotel.

Immerse yourself in the wilds of Tanzania

Discount rate calculated on shared basis
(incl. game package, meet & greet, park fees/taxes
and internal transport).

Private Game Drives:

Supplement Rate of:

\$250 per 4 seat vehicle per day.

\$350 per 6 seat vehicle per day.

Package Includes Room Rate

Plus:

Park and Concession fees

Breakfast, Lunch, Dinner

Two shared game activities per night

Meet & Greet

Domestic Flights

Airstrip Transfers

Tea and Coffee

Laundry

High Season

1st July - 31 October

24th December - 4th January

Low Season

5th January - 30th June

1st November - 23rd December